

[Skip to main content](#)

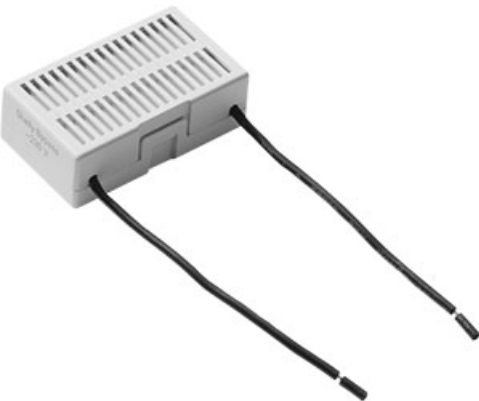
[Show navigation](#)



[Knowledge Base](#) /
[Devices](#) /
[Accessories](#)

[Skip table of contents](#)

Shelly Bypass



Short description

Shelly Bypass is required for Shelly devices that do not need neutral wire to operate if the load they switch is less than 20 W at 240 VAC.

Compatibility:

Compatible with Shelly 1L and Shelly Dimmer 2.

Main applications

- Residential
- MDU (Multi Dwelling Units - apartments, condominiums, hotels, etc.)
- Light commercial (small office buildings, small retail/restaurant/gas station, etc.)
- Government/municipal
- University/college

Specifications

	Type	Value
Physical		
Size (HxWxD):		39x23x13 mm/ in (without wires)
Material:		Plastic
Color:		White
Environmental		
Ambient temperature:		-20° C to 70° C/ -5° F to 158° F
Humidity:		30 % to 70 % RH
Max. altitude		2000 m/ 6562 ft
Electrical		
Working voltage:		230 VAC
Power consumption:		1/2 W

Power consumption:

<4 W

Printed User Guide

Multilanguage user guide - [English](#), [Deutsch](#), [Italiano](#), [Español](#), [Português](#), [Français](#)

Installation guides

[Shelly Bypass User and Safety guide](#)



[Privacy policy](#) / [Cookie policy](#) / [Support](#) / [FB community support](#) / [Contact us](#)

Copyright © 2024 Shelly Cloud. Allterco Robotics OOD • Powered by Scroll Viewport & Atlassian Confluence